



PROIZVODNJA POGREBNE OPREME



MIT-BERANE

Osnovano 1951.



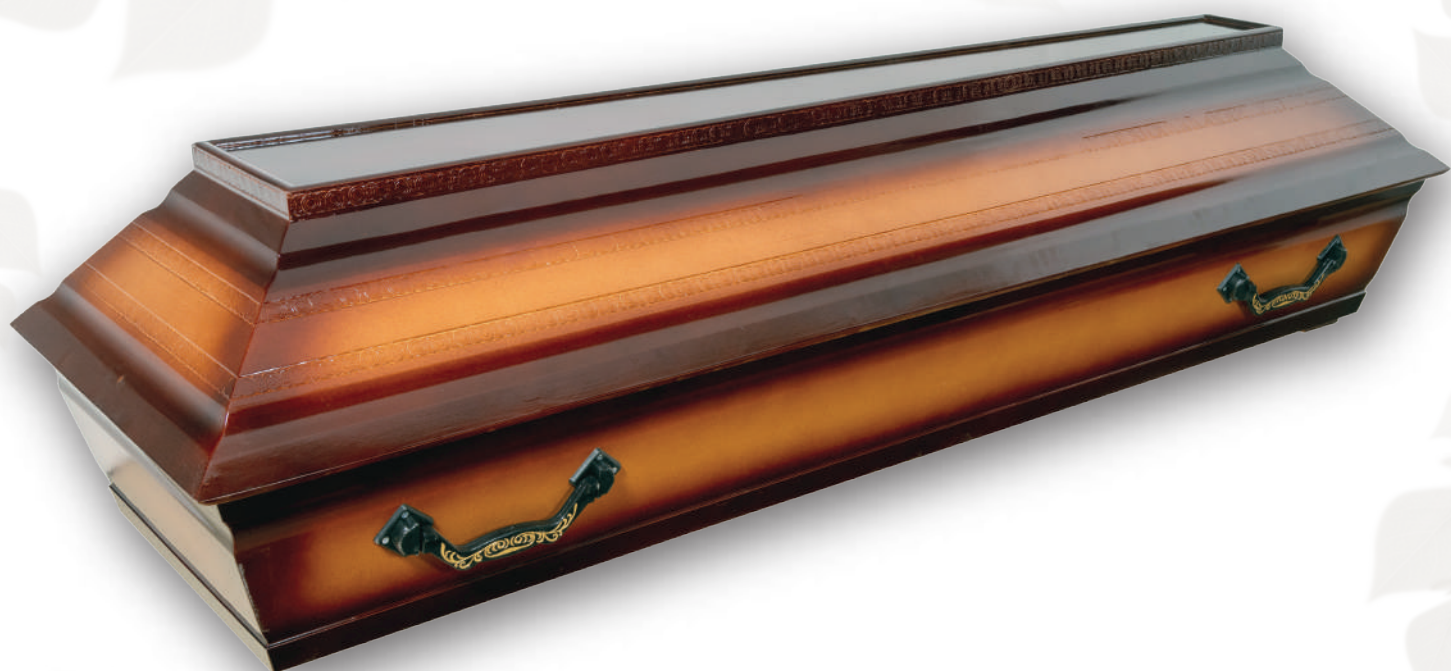
S-socijalac



S-11



S-21



S-31



S-31NSK



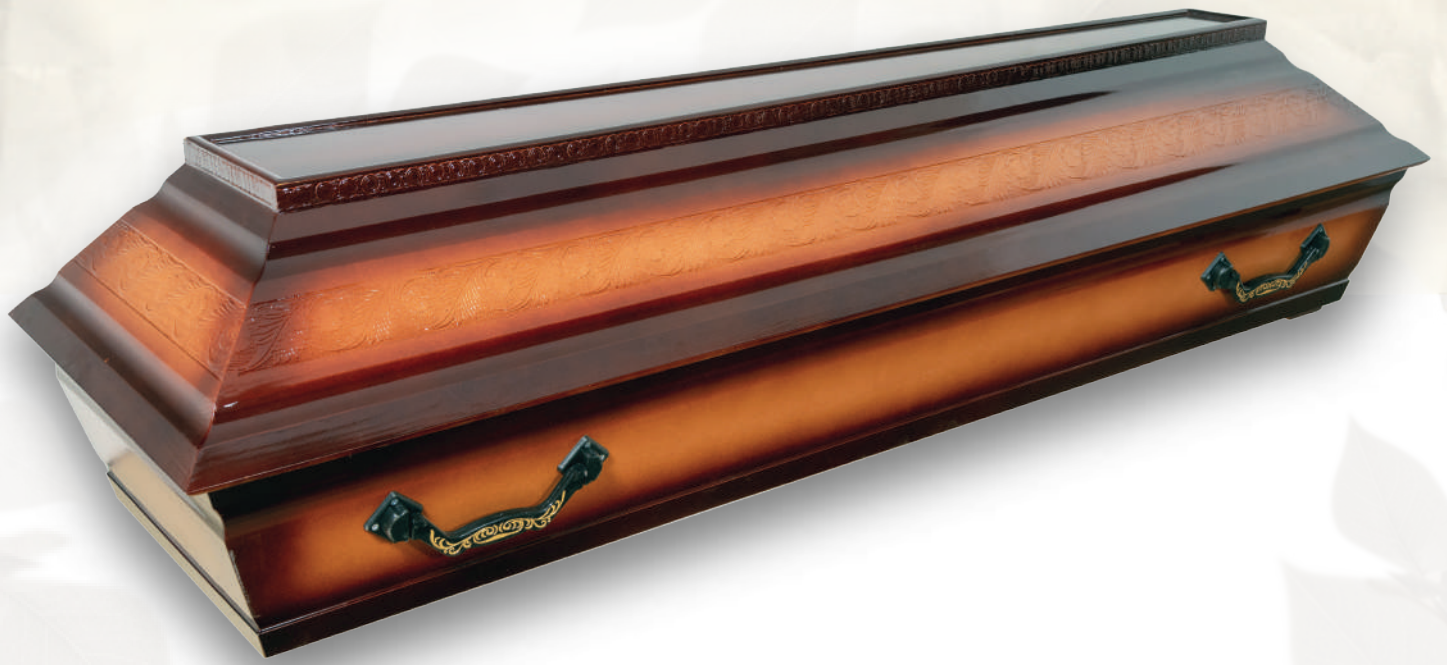
S-31ČNSK



S-41



S-41CS



S-51



S-51CS



S-51ČCS



S-31P (produženi)



S-31K(kratki)



S-31Z(zeleni)



PS-1



PS-2



PS-5Č



PS-3B



PS-2 (produženi)



SK-1



SK-1Š[✓]



SK-3Č[✓]



SK-5LUX (gravura krst)



SK-6LUX (bajc wenge)



SK-7LUX (gravura ruža)



SK-8Š



SK-9Š[✓]



SK-1DŽ[✓] (džambo)



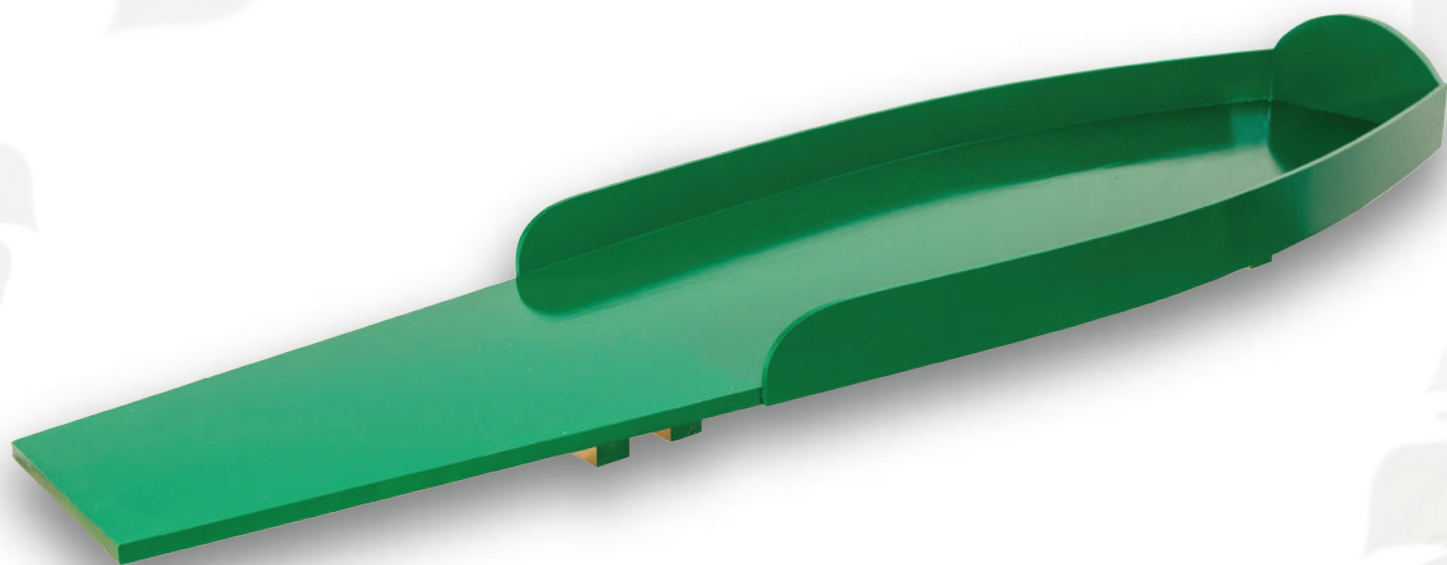
ST-1



ST-3^č



T-1(tabut zatvoreni)



T-2(tabut otvoreni)



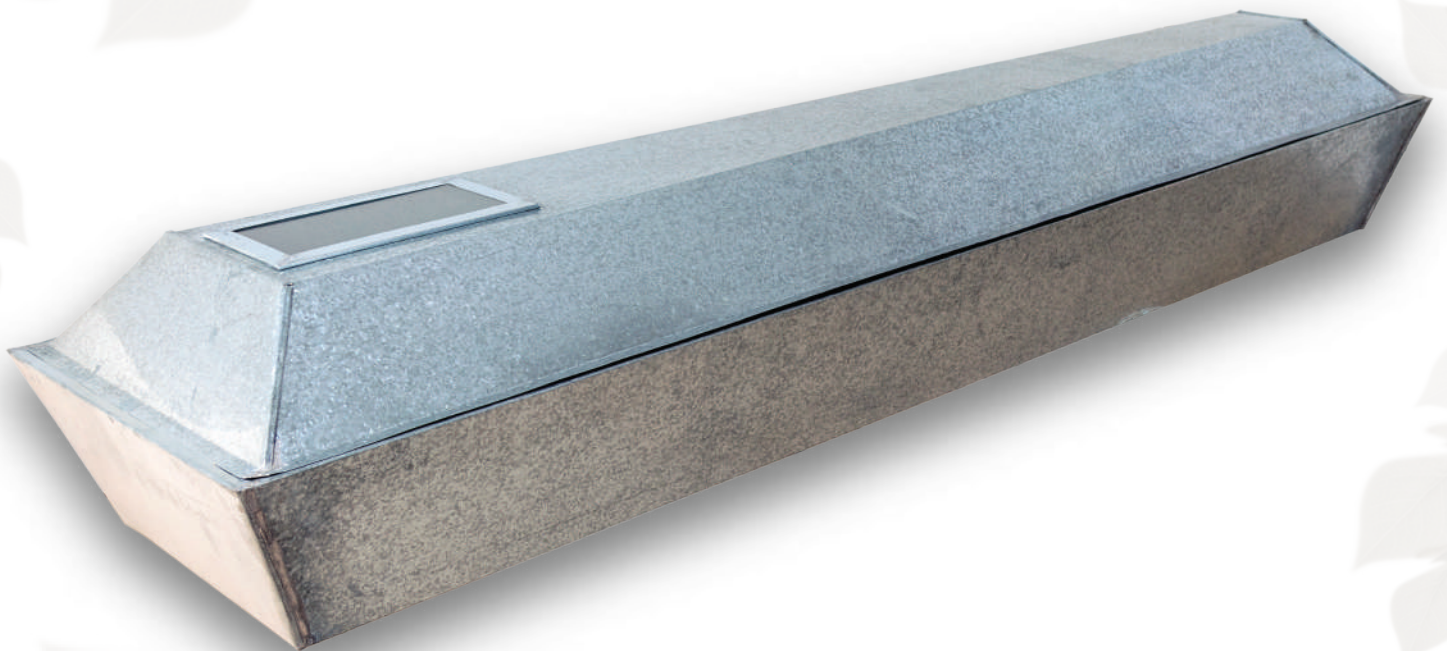
Sanduk za eshumaciju



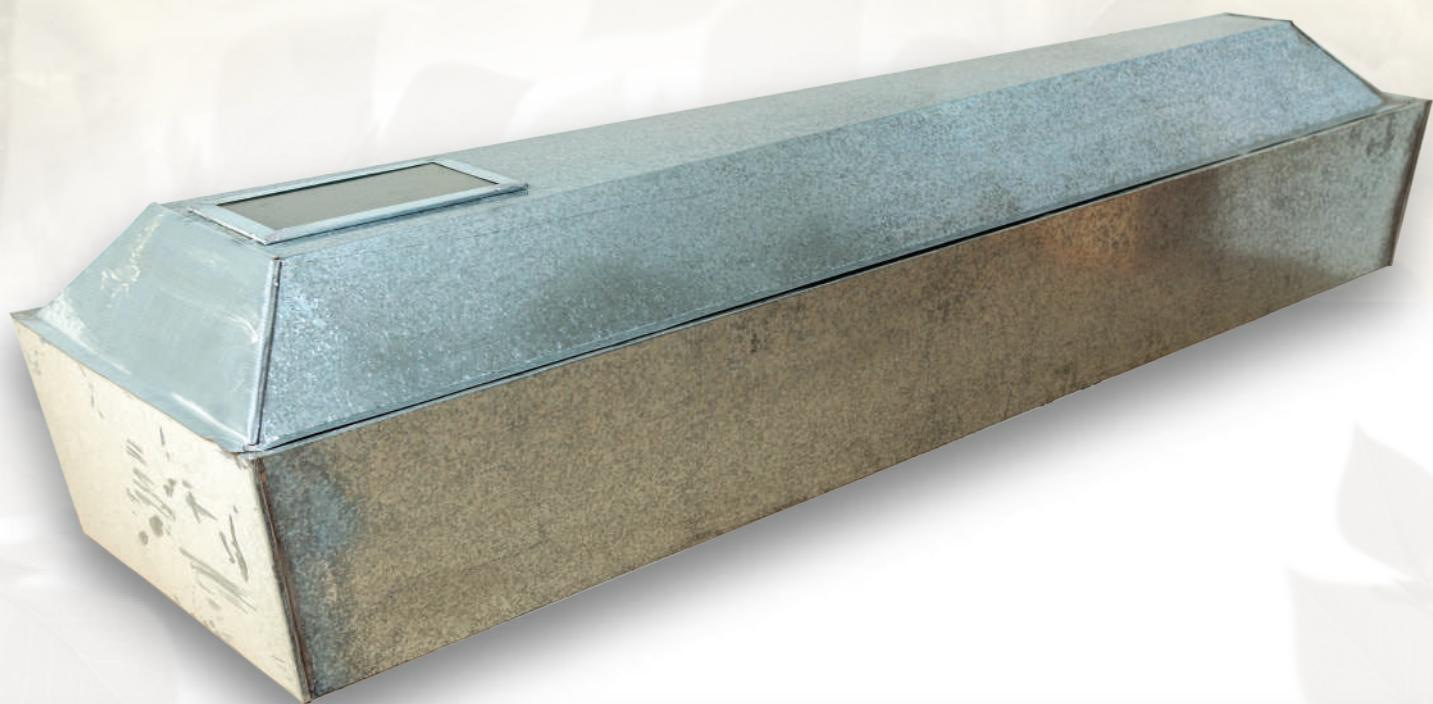
SD-70



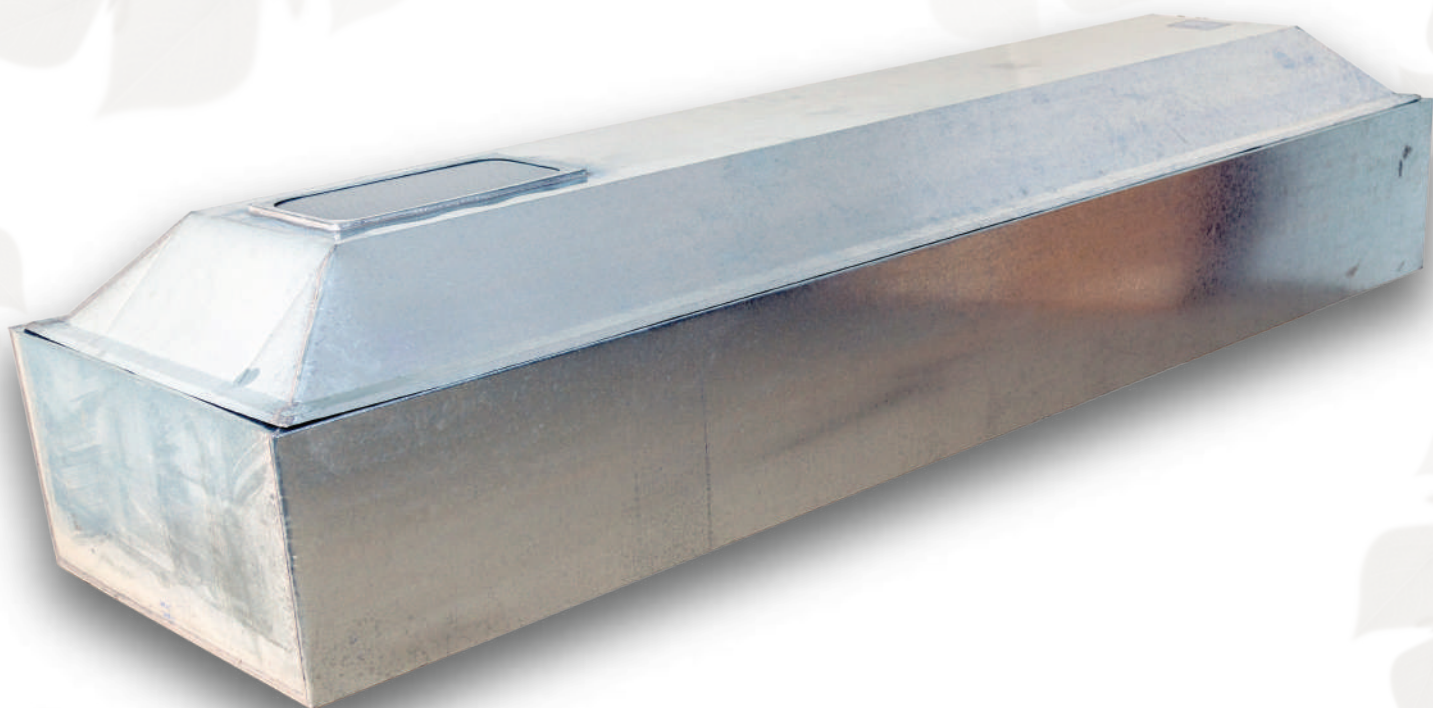
SD-100



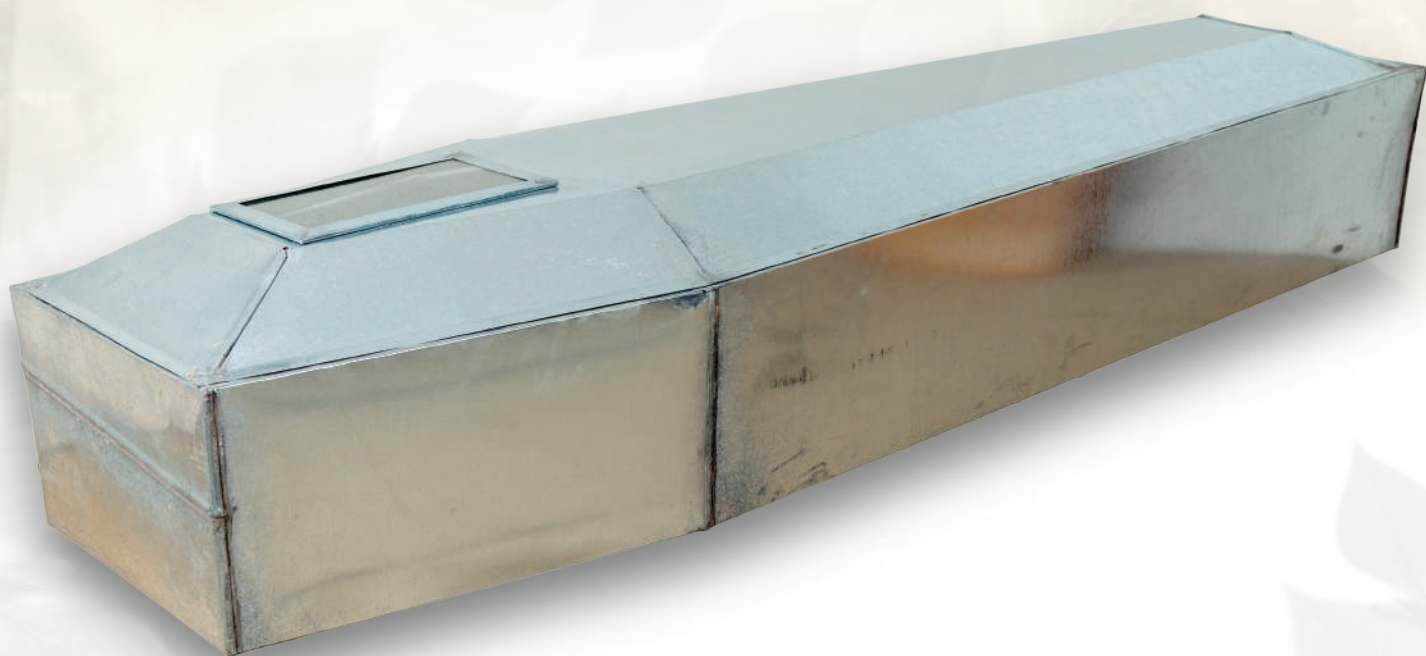
LT



LPS



LSK



LST



K-1



KS-1



P-1



NŽ



NM



In the year 1951, a carpentry craft store was established, which deals with traditional craftworks. In its development path from a small carpentry workshop, the company has grown up into a modern wood processing plant engaged in the production of various wooden materials, such as construction carpentry, kitchen furniture and closets, handrails and treads for stairs, wooden paneling and decking.

In the year 1996, the company started the production of funeral equipment and its accessories. The company operates on full and complete production process starting from the raw log material and all to the final product for immediate sale. The natural environment in which our company plants are located is rich in wood, with skilled craftsmen that have a long tradition in wood processing using modern technologies on daily basis, with young and ambitious management, presents our recommendation as enterprise and guarantee of quality.



Godine 1951. osnovano je zanatsko stolarska radnja koja se bavi tradicionalnim zanatstvom. Na svom razvojnem putu od stolarske radionice firma izrasta u savremenog drvoprerađivača koji se bavi proizvodnjom razne građe, građevinske stolarije, kuhinjskog namještaja i plakara, rukohvata i gazišta za stepenice, lamperije i brodskog poda.

Godine 1996. firma započinje proizvodnju pogrebne opreme, firma ima zaokružen proces proizvodnje od trupca do finalnog proizvoda. Prirodni ambijent u kojem je firma smještena bogat je drvetom, dobri majstori sa dugogodišnjom tradicijom u obradi drveta sa savremenom tehnologijom, mladim i ambicioznim menadžmentom, čini našu preporuku i garanciju kvaliteta.



Osnovano 1951.

mob:+382/67-638-920
+382/67-911-7788
mail:mits@t-com.me
www.mitberane.com